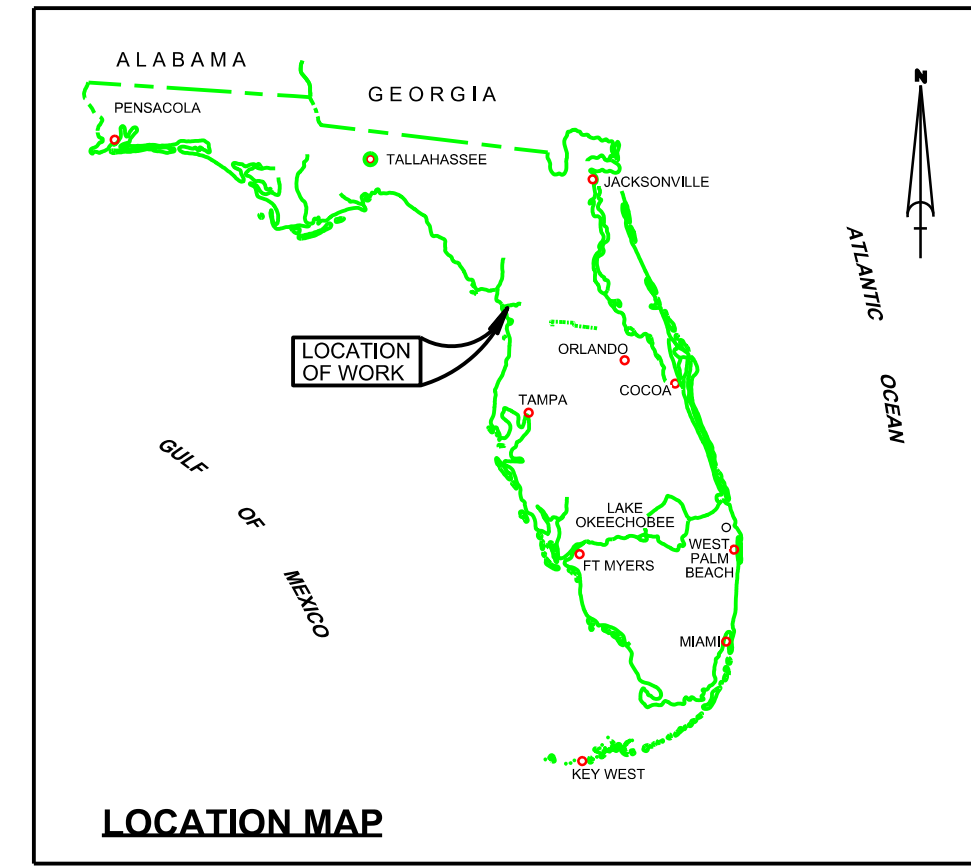


SURVEY NOTES

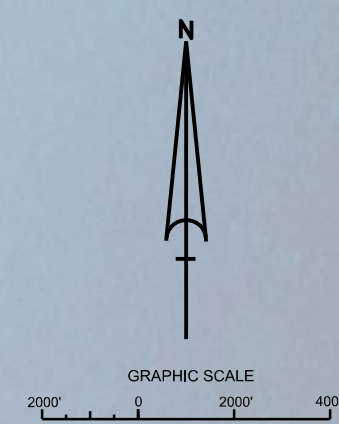
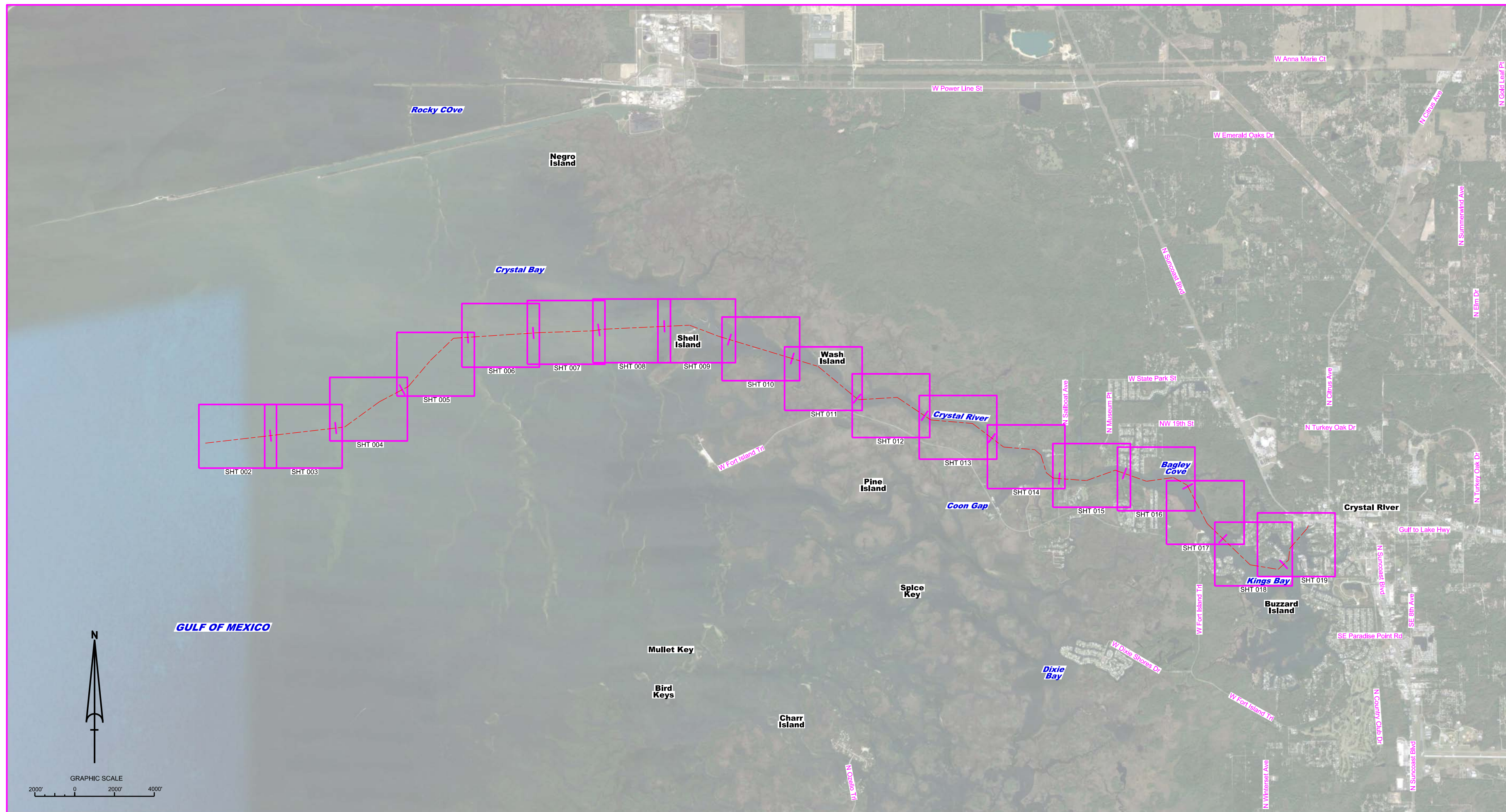
1. REFER TO SURVEY NO. 22-080.
2. SOUNDINGS ARE IN FEET AND TENTHS AND REFER TO NOAA'S REPORTED MEAN LOWER LOW WATER (MLLW) OF THE 1983-2001 TIDAL EPOCH.
3. TIDAL REDUCTIONS WERE OBTAINED UTILIZING A REAL-TIME KINEMATIC (RTK) GPS AND REFERENCED TO MLLW UTILIZING A HYPACK KINEMATIC TIDE DATUM (KTD) MODEL.
KTD FILE NAME IS: "SPC-FL-WEST-2010-12-07.KTD".
4. ALL ELEVATIONS ARE BELOW THE CHART DATUM UNLESS PRECEDED BY A (+) SIGN.
5. PLANE COORDINATES ARE BASED ON THE TRANSVERSE MERCATOR PROJECTION FOR THE WEST ZONE OF FLORIDA AND REFERENCED TO NORTH AMERICAN DATUM OF 1983 (NAD83).
6. ALL STATIONING REFERS TO THE UNCONTROLLED CENTERLINE.
7. THIS SURVEY WAS PERFORMED USING REAL-TIME KINEMATIC (RTK) GPS POSITIONING WITH THE FOLLOWING REFERENCE BASE LOCATIONS:
REFERENCE BASE LOCATED AT "CR 101" (PID: BBUB01)
REFERENCE BASE LOCATED AT "872 7248 A" (PID: AL8258)
8. DEPTHS DEPICTED BY THIS SURVEY ARE REFERENCED TO MLLW, TIDAL EPOCH 1983-2001 AS REPORTED BY THE NATIONAL OCEANIC AND ATMOSPHERIC ADMINISTRATION (NOAA). A MODIFIED VERSION OF NOAA'S VDATUM MODEL WAS USED TO CALIBRATE TO THE PUBLISHED MLLW HEIGHTS OF THE BENCHMARK BELOW:
NOAA TIDAL STATION 872 7348, TWIN RIVERS MARINA (PID: AL7276)
VERTICAL MEASUREMENTS WERE MADE USING A ROSS SMARTSOUNDER DUAL-FREQUENCY 28/200 KHZ SINGLE-BEAM TRANSDUCER. ALL SOUNDINGS SHOWN ARE IN HIGH FREQUENCY.

VESSEL	DATE OF SURVEY	CUT
SB-36	22 SEP 2022	CRYSTAL RIVER
9. AIDS TO NAVIGATION WERE LOCATED DURING THIS SURVEY.
10. THE INFORMATION DEPICTED ON THIS MAP REPRESENTS THE RESULTS OF SURVEYS MADE ON THE DATES INDICATED ABOVE AND CAN ONLY BE CONSIDERED AS INDICATING THE GENERAL CONDITIONS AT THAT TIME. THIS CHART IS SOLELY FOR THE DISTRIBUTION OF AVAILABLE DEPTHS AT THE TIME OF THE SURVEY.
11. SURVEY ACCURACY PERFORMANCE STANDARDS, QUALITY CONTROL, AND QUALITY ASSURANCE REQUIREMENTS WERE FOLLOWED DURING THIS SURVEY IN ACCORDANCE WITH USACE EM 1110-2-1003, HYDROGRAPHIC SURVEYING, 30 NOV 2013.

LEGEND	
	MONUMENT
	LIGHTED BEACON
	GREEN DAY BEACON
	RED DAY BEACON
	RED LIGHTED BUOY
	GREEN LIGHTED BUOY
	CAN BUOY
	NUN BUOY
	TIDE STAFF
	PROJECT DEPTH



**CRYSTAL RIVER
CITRUS COUNTY, FLORIDA
PROJECT CONDITION SURVEY FY22
6-FOOT PROJECT**



US Army Corps of Engineers
Jacksonville District
SAFETY ON THIS JOB
DEPENDS ON YOU

REV	DESCRIPTION	DATE	BY	CHKD	APP

DESIGNED BY: WRM, DWN, JEC

CHECKED BY: GHR

DATE: 22 SEP 2022

DRAWN BY: WRM, JEC

DATE: 22 SEP 2022

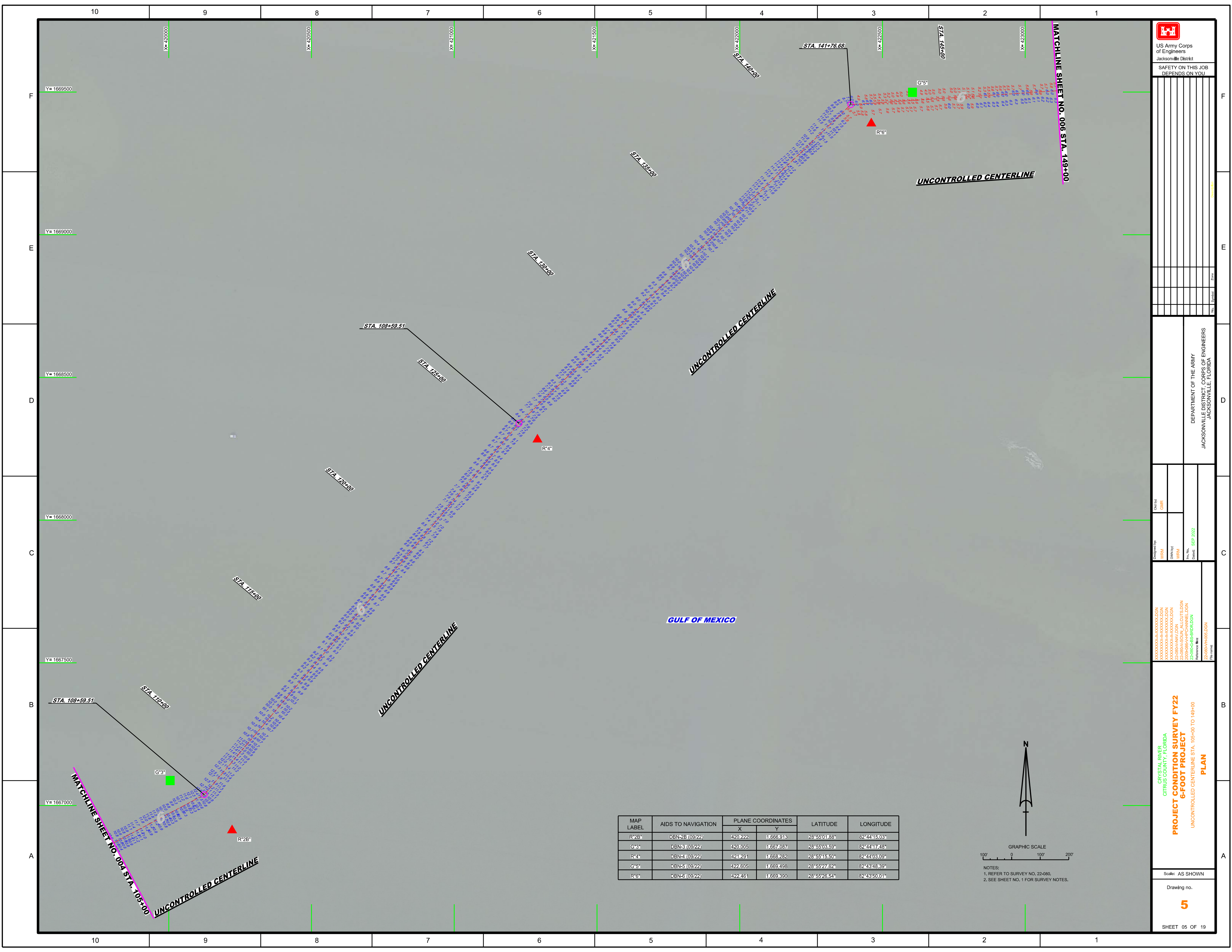
CRYSTAL RIVER, CITRUS COUNTY, FLORIDA
**PROJECT CONDITION SURVEY FY22
6-FOOT PROJECT**
INDEX, LOCATION AND VICINITY MAP

Scale: AS SHOWN

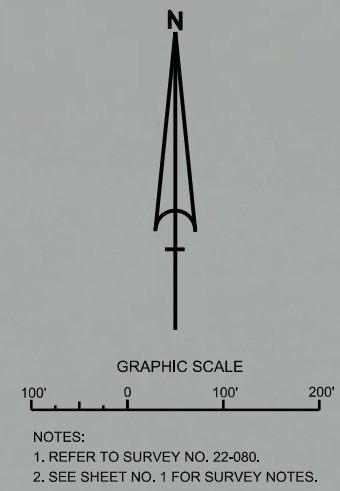
Drawing no.

1

SHEET 01 OF 19



MAP LABEL	AIDS TO NAVIGATION	PLANE COORDINATES		LATITUDE	LONGITUDE
		X	Y		
R*2B*	DBN-2B (09/22)	420.222	1.6669313	28°55'01.88"	82°44'15.03"
G*3*	DBN-3 (09/22)	420.005	1.667.087	28°55'03.59"	82°44'17.46"
R*4*	DBN-4 (09/22)	424.291	1.668.262	28°55'15.50"	82°44'03.09"
G*5*	DBN-5 (09/22)	422.605	1.669.498	28°55'27.62"	82°43'48.39"
R*6*	DBN-6 (09/22)	422.461	1.669.390	28°55'26.54"	82°43'50.01"



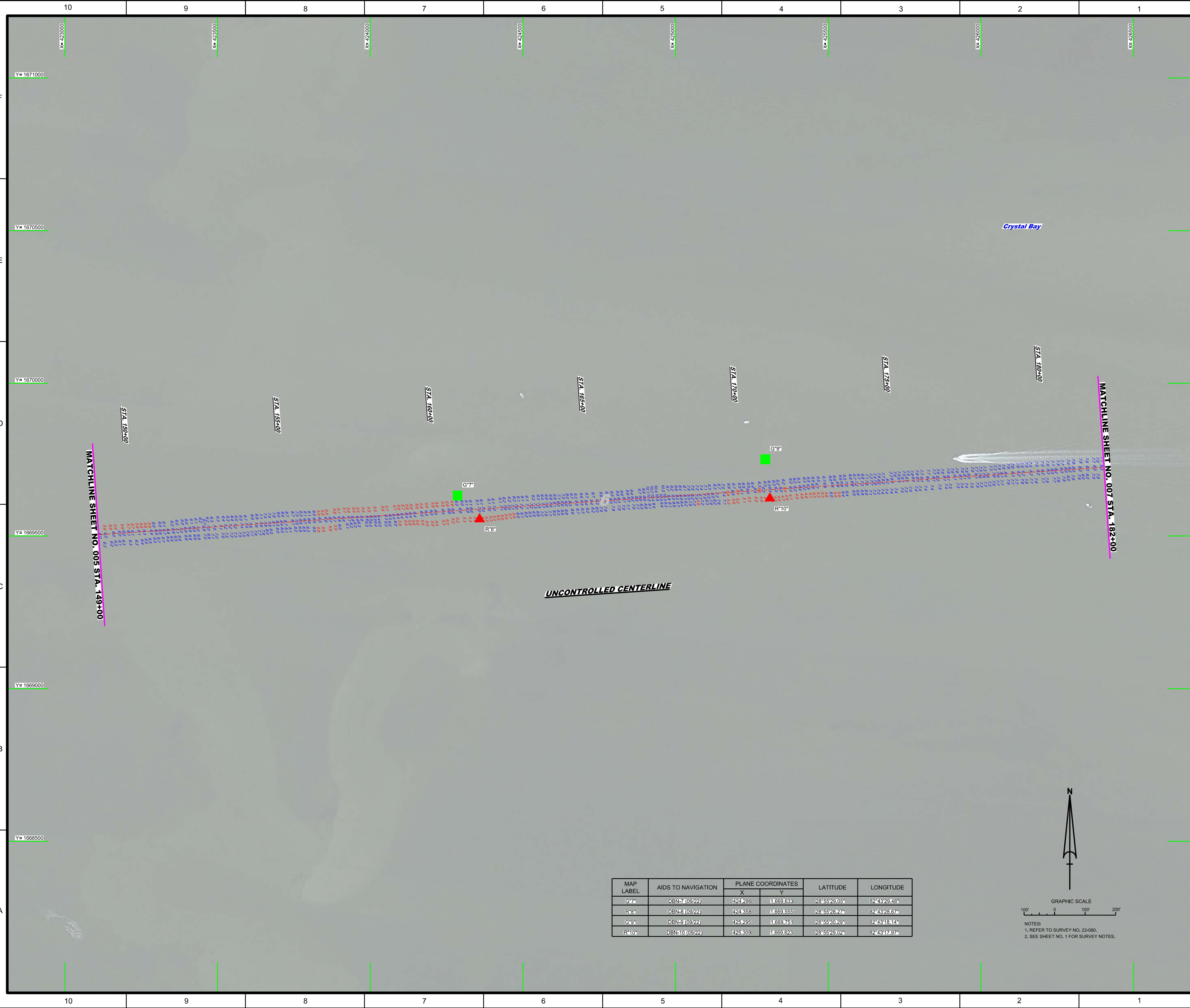
US Army Corps of Engineers
Jacksonville District
SAFETY ON THIS JOB DEPENDS ON YOU

DEPARTMENT OF THE ARMY
JACKSONVILLE DISTRICT, CORPS OF ENGINEERS
JACKSONVILLE, FLORIDA

Checked by:	GMR
Designed by:	WRM
DRAWN BY:	WRM
FILE NO.:	22-080-6B-3B-1000-01
DATE:	SEP 2022

PROJECT CONDITION SURVEY FY22
6-FOOT PROJECT
UNCONTROLLED CENTERLINE STA. 105+00 TO 149+00
PLAN

Scale: AS SHOWN
Drawing no. **5**
SHEET 05 OF 19

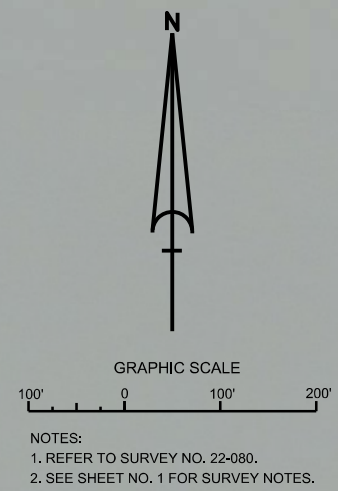


UNCONTROLLED CENTERLINE

MATCHLINE SHEET NO. 005 STA. 149+00

MATCHLINE SHEET NO. 007 STA. 182+00

MAP LABEL	AIDS TO NAVIGATION	PLANE COORDINATES		LATITUDE	LONGITUDE
		X	Y		
G7	DBN-7 (09/22)	424,286	1,669,633	28°55'29.05"	82°43'29.46"
R8	DBN-8 (09/22)	424,358	1,669,555	28°55'28.27"	82°43'28.67"
G9	DBN-9 (09/22)	425,295	1,669,761	28°55'30.29"	82°43'18.14"
R10	DBN-10 (09/22)	425,309	1,669,628	28°55'29.02"	82°43'17.97"



F
E
D
C
B
A

F
E
D
C
B
A

10 9 8 7 6 5 4 3 2 1

10 9 8 7 6 5 4 3 2 1

Y=1671000
Y=1670500
Y=1670000
Y=1669500
Y=1669000
Y=1668500

X=423000 X=423500 X=424000 X=424500 X=425000 X=425500 X=426000 X=426500

STA 158+00

STA 155+00

STA 160+00

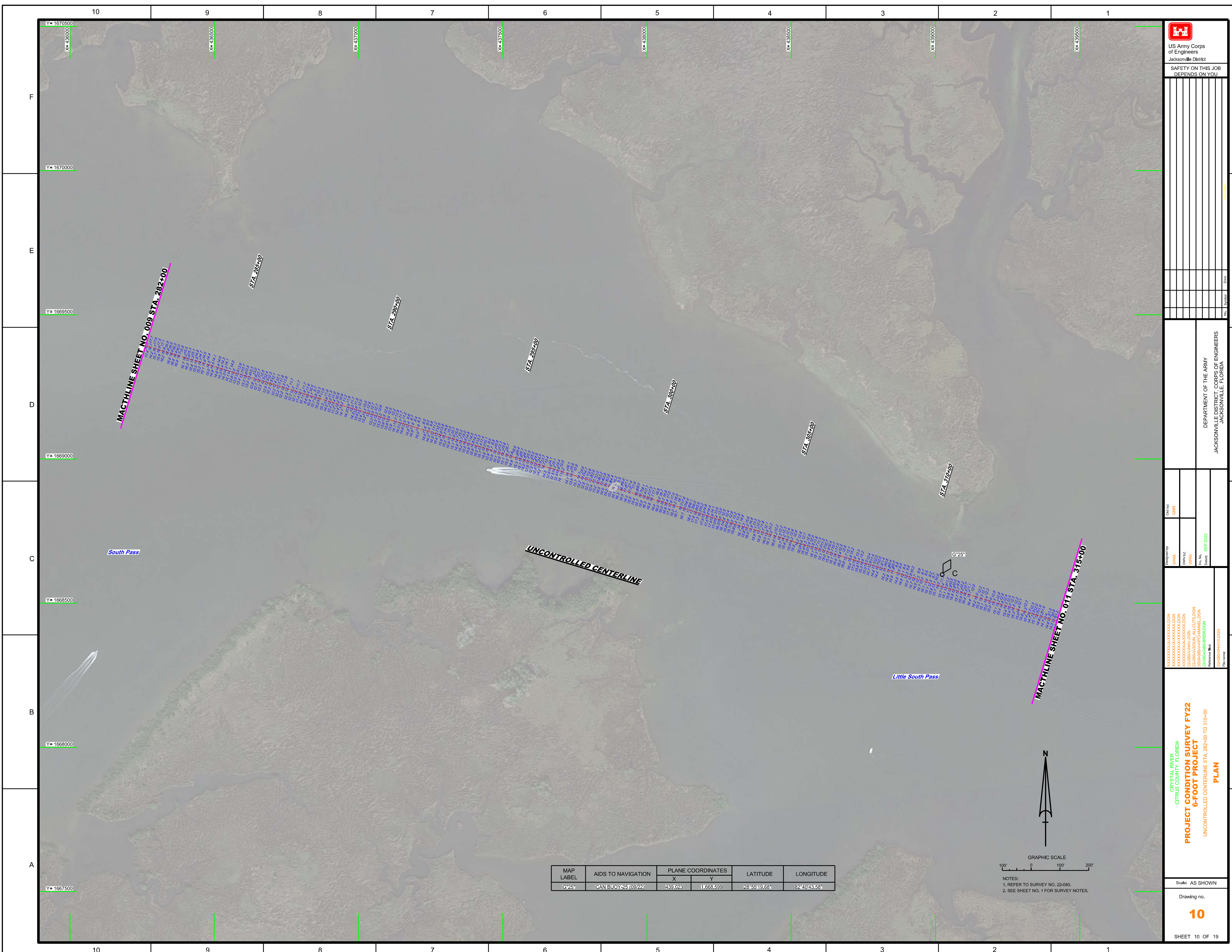
STA 165+00

STA 170+00

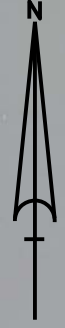
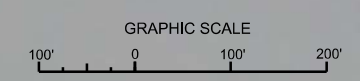
STA 175+00

STA 180+00

Crystal Bay



MAP LABEL	AIDS TO NAVIGATION	PLANE COORDINATES		LATITUDE	LONGITUDE
		X	Y		
G-25*	CAN BUOY-25 (09/22)	439,023	1,668,599	28° 55' 19.68"	82° 40' 43.58"



NOTES:
1. REFER TO SURVEY NO. 22-080.
2. SEE SHEET NO. 1 FOR SURVEY NOTES.

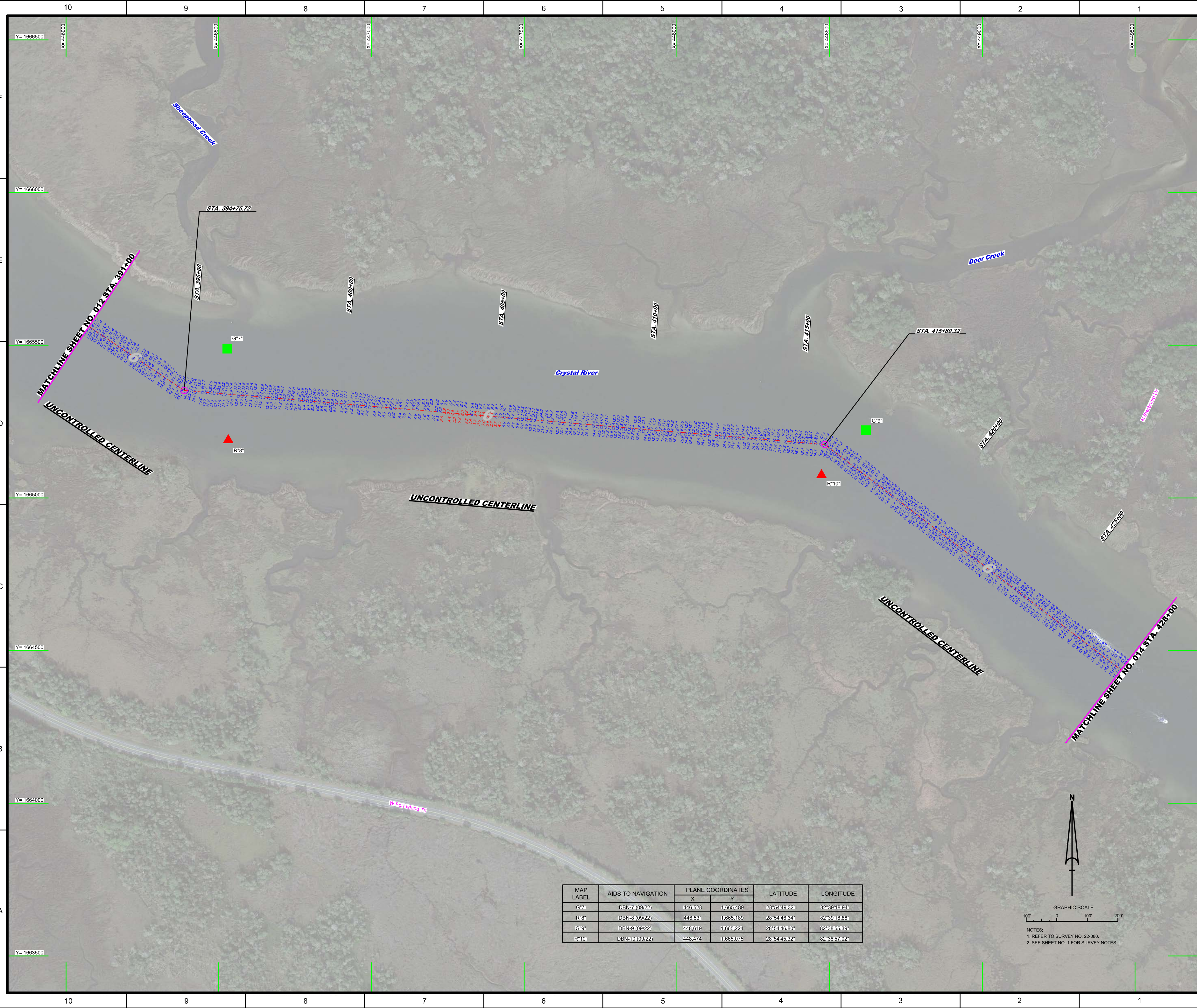
US Army Corps of Engineers
Jacksonville District
SAFETY ON THIS JOB
DEPENDS ON YOU

Check by:	GHR
Designed by:	WRM
Drawn by:	WRM
File No.:	CIF
Date:	SEP 2022

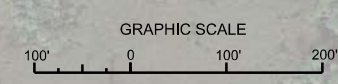
DEPARTMENT OF THE ARMY JACKSONVILLE DISTRICT, CORPS OF ENGINEERS JACKSONVILLE, FLORIDA	
XXXXXXXXXXXXXXXXXXXX	XXXXXXXXXXXXXXXXXXXX
XXXXXXXXXXXXXXXXXXXX	XXXXXXXXXXXXXXXXXXXX
XXXXXXXXXXXXXXXXXXXX	XXXXXXXXXXXXXXXXXXXX
XXXXXXXXXXXXXXXXXXXX	XXXXXXXXXXXXXXXXXXXX
XXXXXXXXXXXXXXXXXXXX	XXXXXXXXXXXXXXXXXXXX
XXXXXXXXXXXXXXXXXXXX	XXXXXXXXXXXXXXXXXXXX
XXXXXXXXXXXXXXXXXXXX	XXXXXXXXXXXXXXXXXXXX
XXXXXXXXXXXXXXXXXXXX	XXXXXXXXXXXXXXXXXXXX
XXXXXXXXXXXXXXXXXXXX	XXXXXXXXXXXXXXXXXXXX

PROJECT CONDITION SURVEY FY22
6-FOOT PROJECT
UNCONTROLLED CENTERLINE STA. 282+00 TO 315+00
PLAN

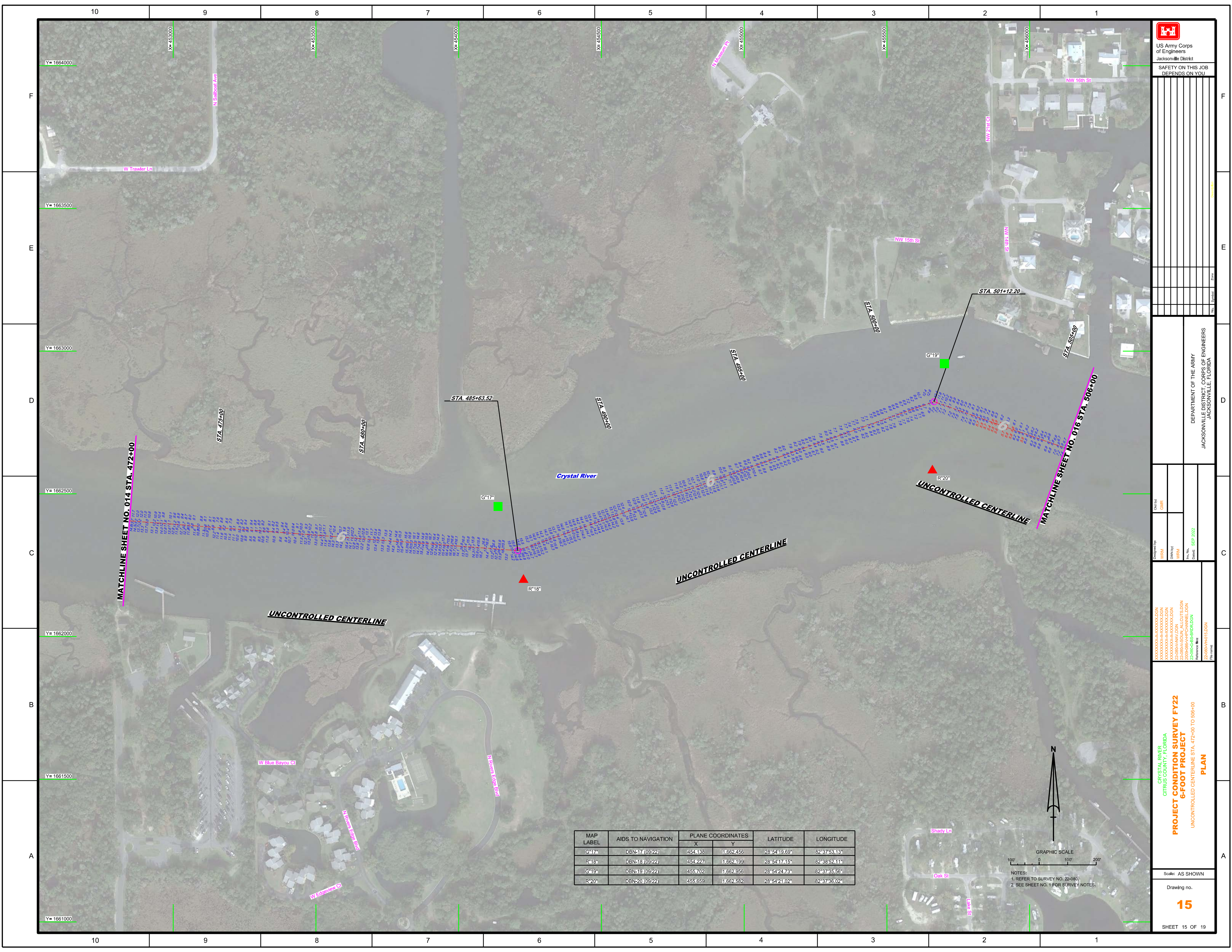
Scale: AS SHOWN
Drawing no.
10
SHEET 10 OF 19



MAP LABEL	AIDS TO NAVIGATION	PLANE COORDINATES		LATITUDE	LONGITUDE
		X	Y		
G*7	DBN-7 (09/22)	446,528	1,665,489	28°54'49.32"	82°39'18.94"
R*8	DBN-8 (09/22)	446,531	1,665,189	28°54'46.34"	82°39'18.88"
G*9	DBN-9 (09/22)	448,619	1,665,224	28°54'46.80"	82°38'55.59"
R*10	DBN-10 (09/22)	448,474	1,665,075	28°54'45.32"	82°38'57.02"




NOTES:
1. REFER TO SURVEY NO. 22-080.
2. SEE SHEET NO. 1 FOR SURVEY NOTES.



MAP LABEL	AIDS TO NAVIGATION	PLANE COORDINATES		LATITUDE	LONGITUDE
		X	Y		
G*17	DBN-17 (09/22)	454,188	1,662,456	28°54'19.69"	82°37'53.16"
R*18	DBN-18 (09/22)	454,227	1,662,399	28°54'17.35"	82°38'52.11"
G*19	DBN-19 (09/22)	455,702	1,662,956	28°54'24.73"	82°37'35.56"
R*20	DBN-20 (09/22)	455,659	1,662,582	28°54'21.02"	82°37'36.02"

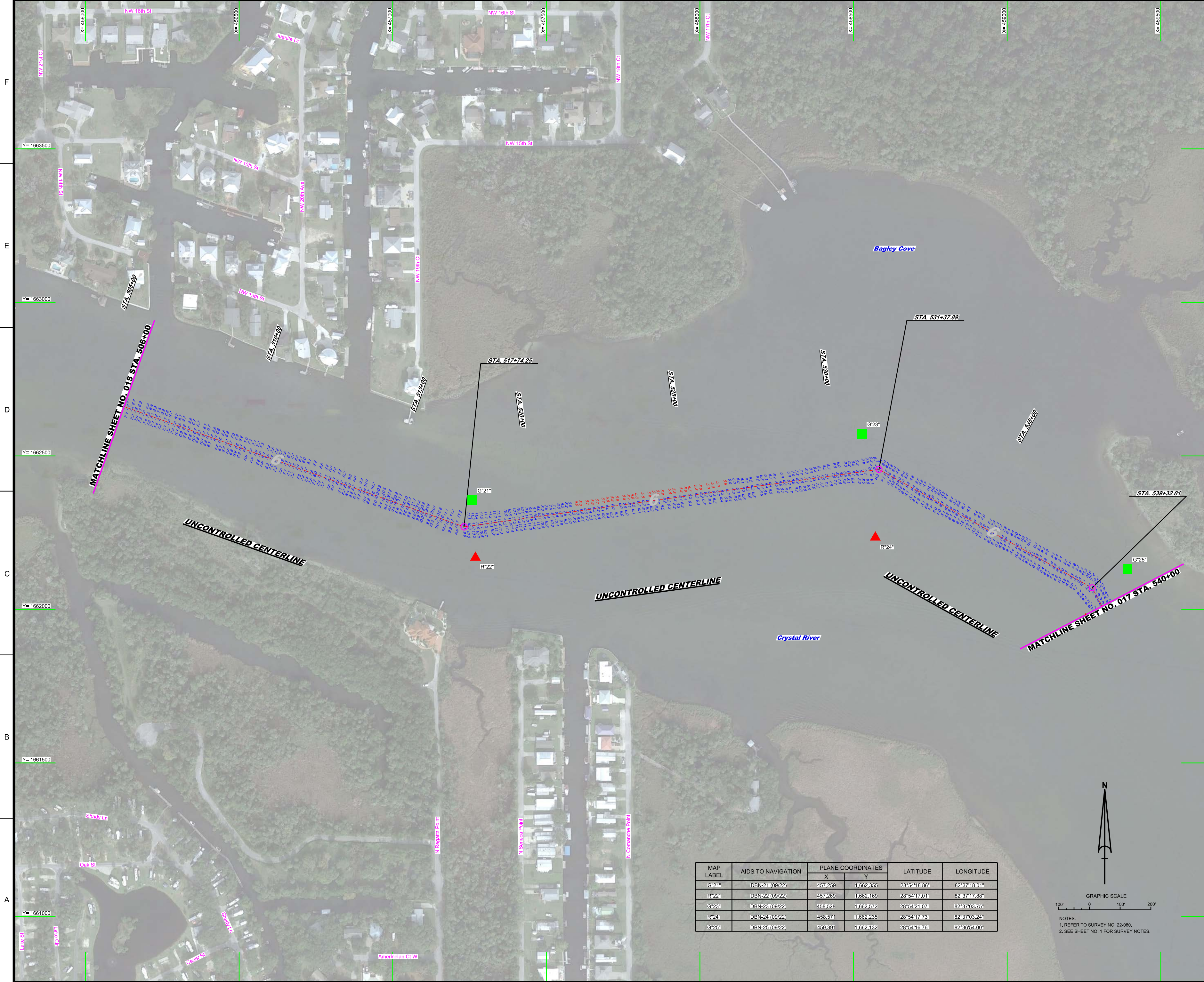
GRAPHIC SCALE
100' 0 100' 200'

NOTES:
1. REFER TO SURVEY NO. 22-080.
2. SEE SHEET NO. 1 FOR SURVEY NOTES.

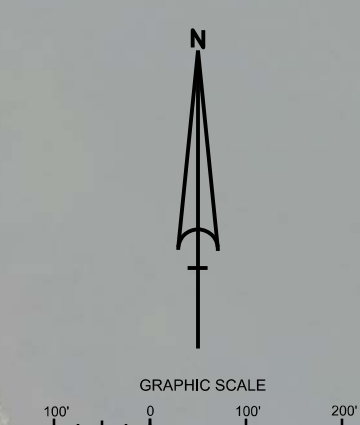


US Army Corps of Engineers
Jacksonville District
SAFETY ON THIS JOB DEPENDS ON YOU

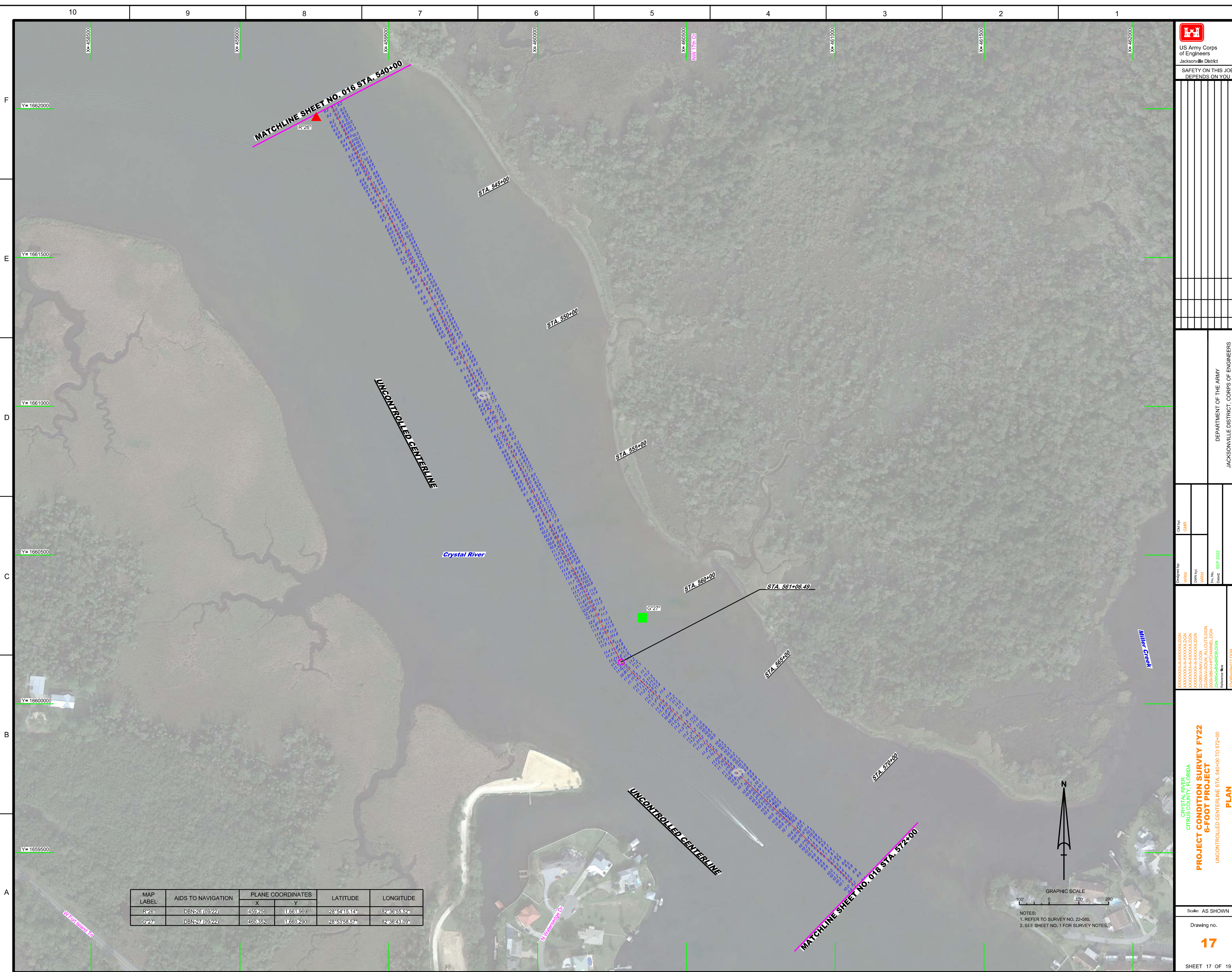
<p>DEPARTMENT OF THE ARMY JACKSONVILLE DISTRICT, CORPS OF ENGINEERS JACKSONVILLE, FLORIDA</p>	<p>Drawn by: GHR Checked by: GHR Date: SEP 2022</p>
<p>PROJECT CONDITION SURVEY FY22 6-FOOT PROJECT UNCONTROLLED CENTERLINE STA. 472+00 TO 506+00 PLAN</p>	
<p>Scale: AS SHOWN</p> <p>Drawing no. 15</p> <p>SHEET 15 OF 19</p>	



MAP LABEL	AIDS TO NAVIGATION	PLANE COORDINATES		LATITUDE	LONGITUDE
		X	Y		
G*21*	DBN-21 (09/22)	457,259	1,662,355	28°54'18.86"	82°37'18.01"
R*22*	DBN-22 (09/22)	457,269	1,662,169	28°54'17.01"	82°37'17.88"
G*23*	DBN-23 (09/22)	458,528	1,662,572	28°54'21.07"	82°37'03.75"
R*24*	DBN-24 (09/22)	458,574	1,662,235	28°54'17.73"	82°37'03.24"
G*25*	DBN-25 (09/22)	459,391	1,662,132	28°54'16.76"	82°36'54.00"



NOTES:
1. REFER TO SURVEY NO. 22-080.
2. SEE SHEET NO. 1 FOR SURVEY NOTES.



US Army Corps of Engineers
Jacksonville District

SAFETY ON THIS JOB
DEPENDS ON YOU

No.	Symbol	Name

DEPARTMENT OF THE ARMY
JACKSONVILLE DISTRICT, CORPS OF ENGINEERS
JACKSONVILLE, FLORIDA

Checked by	Date
GMR	

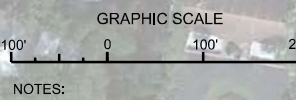
Designed by	Drawn by	Checked by	Date
WRM	WRM	WRM	SEP 2022

CRYSTAL RIVER
CITRUS COUNTY, FLORIDA
**PROJECT CONDITION SURVEY FY22
6-FOOT PROJECT
UNCONTROLLED CENTERLINE STA. 540+00 TO 572+00
PLAN**

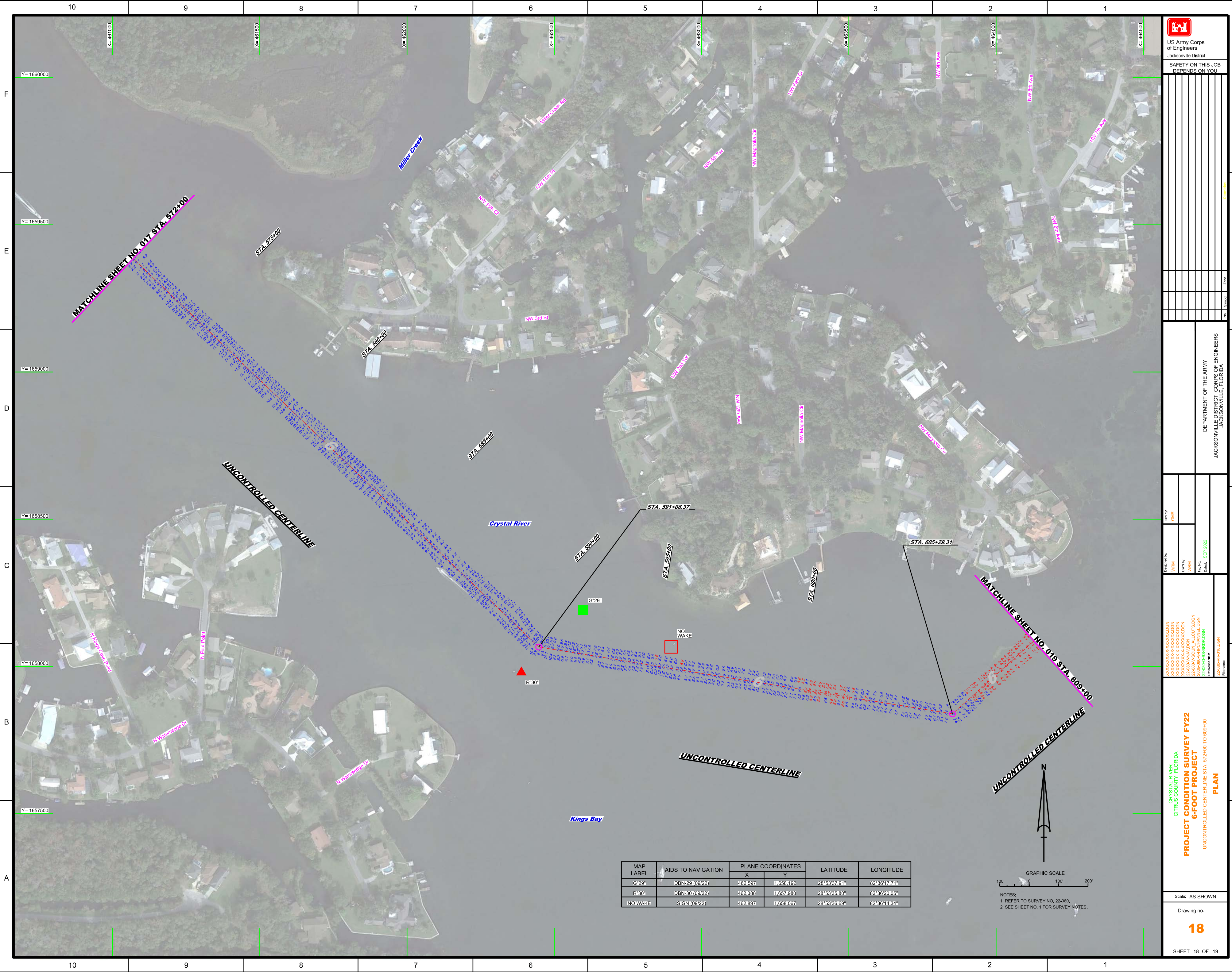
Scale: AS SHOWN


Drawing no.
17

MAP LABEL	AIDS TO NAVIGATION	PLANE COORDINATES		LATITUDE	LONGITUDE
		X	Y		
R*26	DBN-26 (09/22)	459,256	11,661,969	28°54'15.14"	82°36'55.92"
G*27	DBN-27 (09/22)	460,352	11,660,290	28°53'58.57"	82°36'43.09"



NOTES:
1. REFER TO SURVEY NO. 22-080.
2. SEE SHEET NO. 1 FOR SURVEY NOTES.

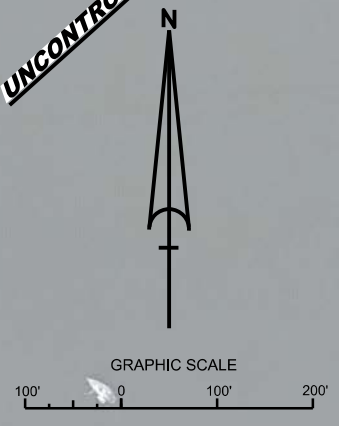



 US Army Corps of Engineers
 Jacksonville District
 SAFETY ON THIS JOB DEPENDS ON YOU

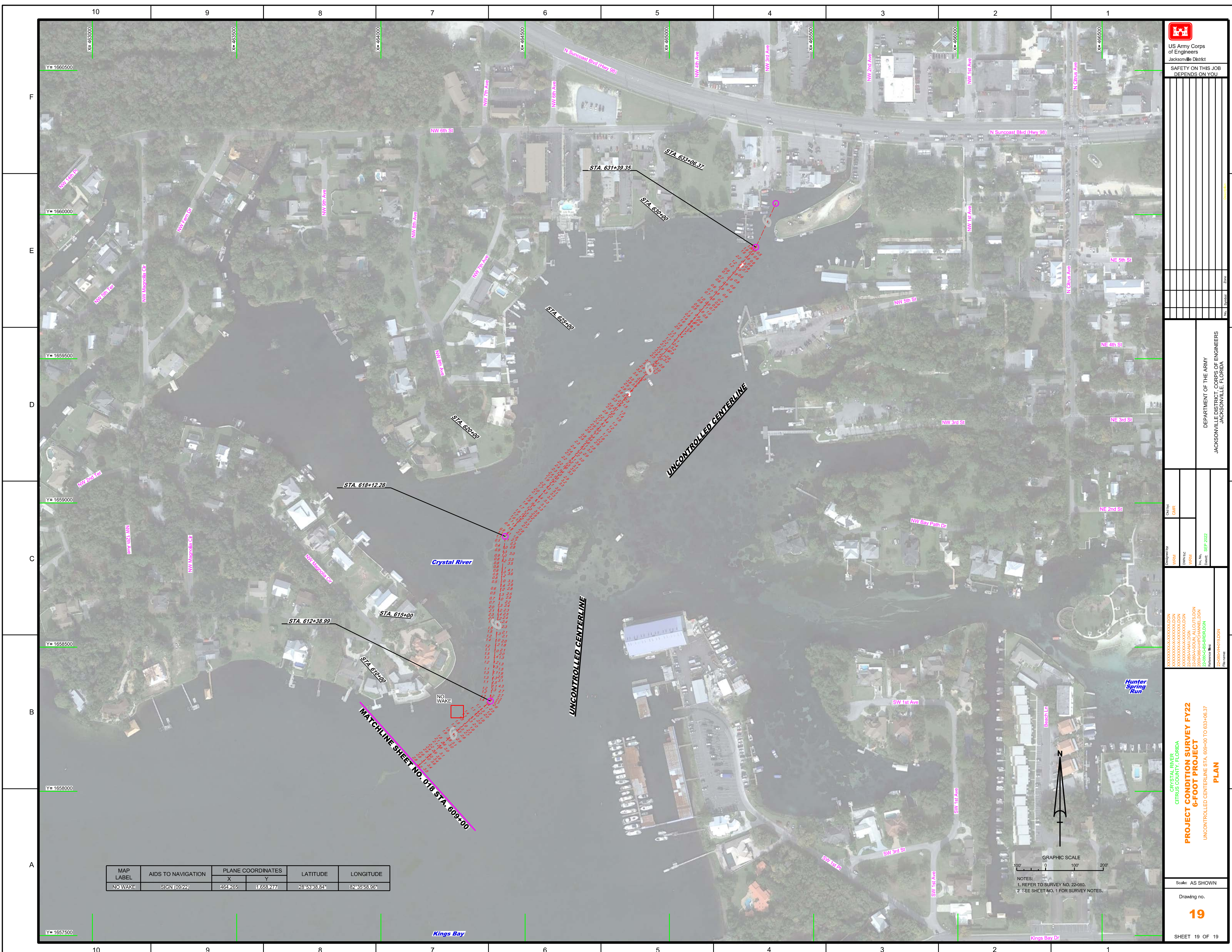
Designed by: WRM DWN/PTC WRM File No.: Date: SEP 2022	Checked by: GHR
--	--------------------

PROJECT CONDITION SURVEY FY22
 6-FOOT PROJECT
 UNCONTROLLED CENTERLINE STA. 572+00 TO 609+00
 PLAN

MAP LABEL	AIDS TO NAVIGATION	PLANE COORDINATES		LATITUDE	LONGITUDE
		X	Y		
G29	DBN-29 (09/22)	462,697	11,658,192	28°53'37.91"	82°38'17.71"
R30	DBN-30 (09/22)	462,888	11,657,980	28°53'35.80"	82°38'20.05"
NO WAKE	SIGN (09/22)	462,897	11,658,067	28°53'36.69"	82°38'14.34"



NOTES:
 1. REFER TO SURVEY NO. 22-080.
 2. SEE SHEET NO. 1 FOR SURVEY NOTES.



DESIGNED BY	WBW
DESIGNED DATE	SEP 2022
CHECKED BY	GHR
CHECKED DATE	

DEPARTMENT OF THE ARMY
 JACKSONVILLE DISTRICT, CORPS OF ENGINEERS
 JACKSONVILLE, FLORIDA

PROJECT CONDITION SURVEY FY22
 6-FOOT PROJECT
 UNCONTROLLED CENTERLINE STA. 609+00 TO 633+06.37
 PLAN

Scale: AS SHOWN
 Drawing no.

MAP LABEL	AIDS TO NAVIGATION	PLANE COORDINATES		LATITUDE	LONGITUDE
		X	Y		
NO WAKE	SIGN (09/22)	464265	11658277	28°53'38.84"	82°35'58.96"

GRAPHIC SCALE
 100' 0 100' 200'
 NOTES:
 1. REFER TO SURVEY NO. 22-080.
 2. SEE SHEET NO. 1 FOR SURVEY NOTES.